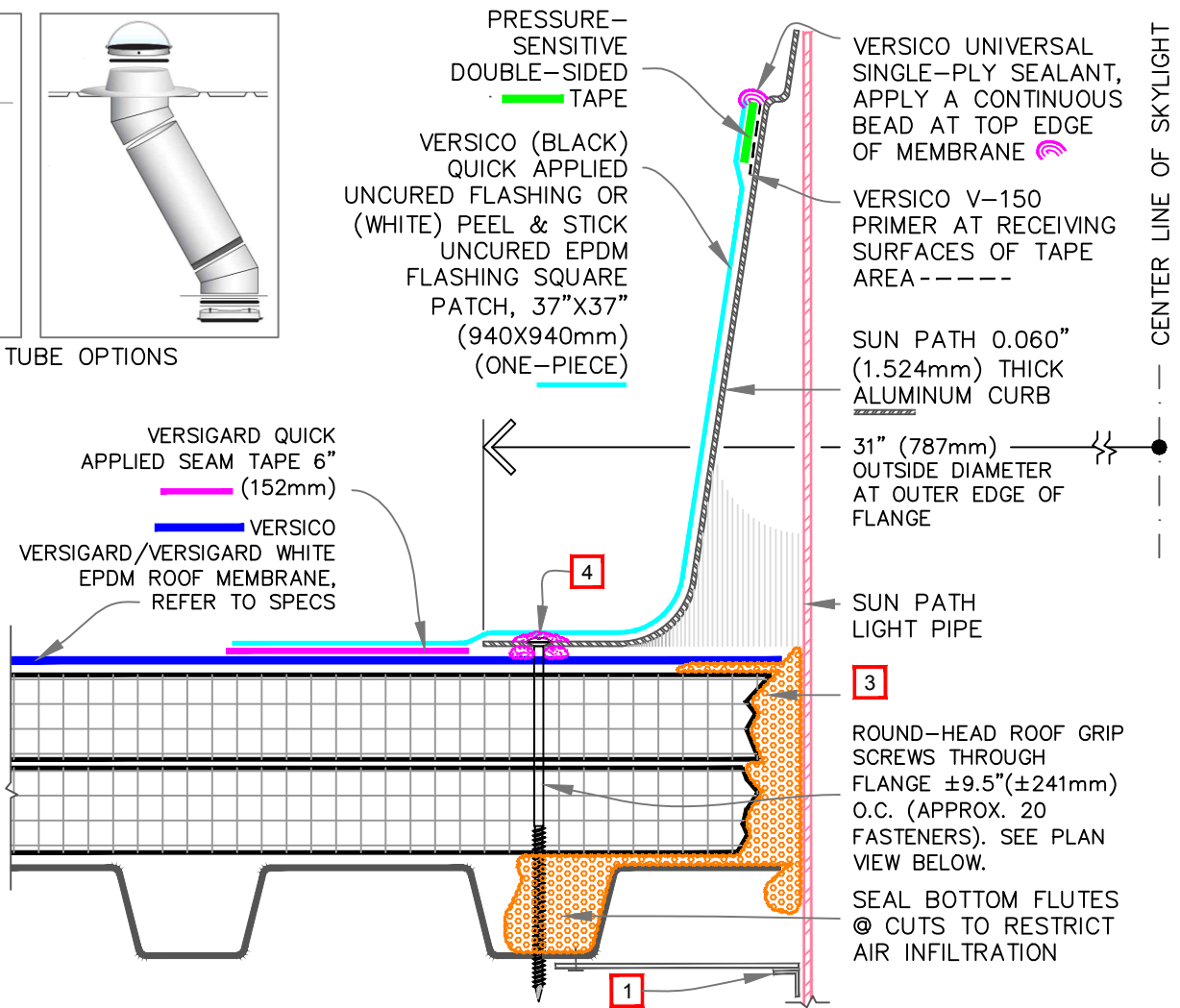


LIGHT TUBE OPTIONS

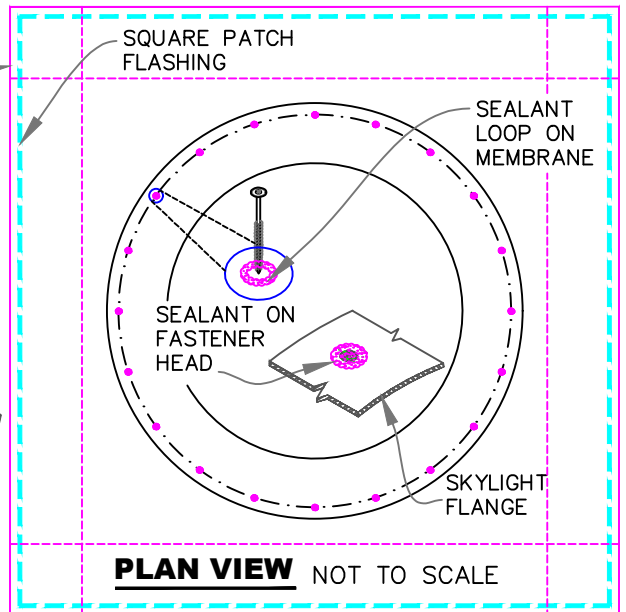
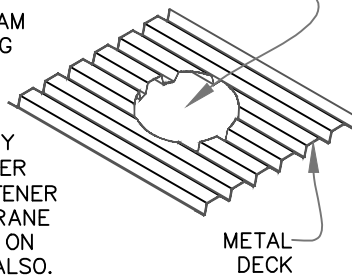


NOTES:

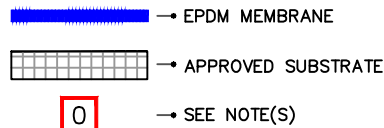
1. ENSURE SUN PATH LIGHT PIPE IS PROPERLY SECURED TO STRUCTURAL MEMBER(S).
2. AT EXISTING ROOF, REMOVE DEBRIS FROM DECK CUTTING AND THOROUGHLY CLEAN THE FIELD MEMBRANE WITH WEATHERED MEMBRANE CLEANER.
3. AT RETROFIT WORK, INJECT FOAM INSULATION. SHAVE PROTRUDING FOAM AS NEEDED TO ACHIEVE SMOOTH SURFACE.
4. VERSICO UNIVERSAL SINGLE-PLY SEALANT 3/8" (10mm) DIAMETER BEAD. SEAL AROUND THE FASTENER PENETRATIONS AT ROOF MEMBRANE SURFACE IN A LOOP & APPLY ON THE TOP OF FASTENER HEAD ALSO.

VERSIGARD EPDM QUICK-APPLIED SEAM TAPE 6" (152mm)

CIRCULAR CUT, NO SQUARE OR RECTANGULAR CUT. REFER TO MANUFACTURER'S INSTRUCTIONS.



SUN PATH LIGHT PIPE CURB
 (VERSIGARD/VERSIGARD WHITE EPDM FLASHING)



VERSICO SUN PATH
VSP-2