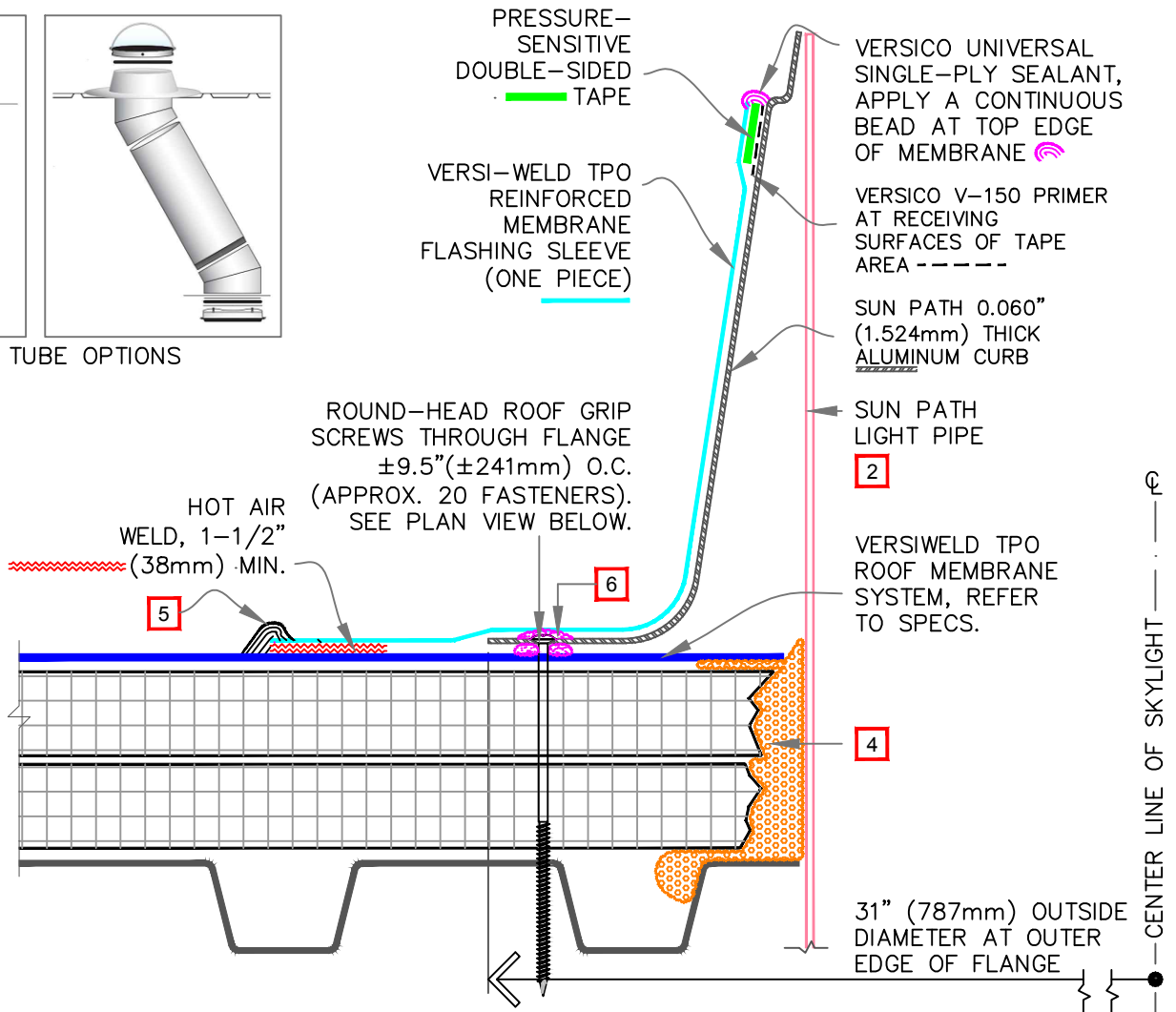
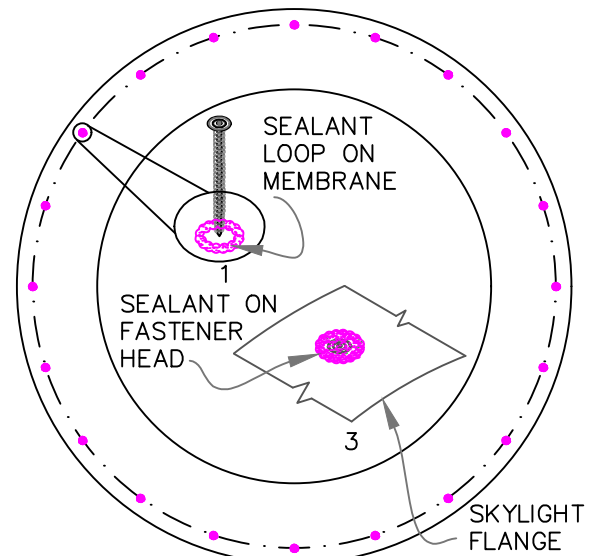


LIGHT TUBE OPTIONS



NOTES:

- CUT ROOF SYSTEM AND DECK AND INSTALL ROUND SUN PATH LIGHT PIPE IN ACCORDANCE WITH THE MANUFACTURER'S REQUIREMENTS AND SPECIFICATIONS.
- ENSURE SUN PATH LIGHT PIPE IS PROPERLY SECURED TO STRUCTURAL MEMBER(S).
- AT EXISTING ROOF, REMOVE DEBRIS FROM DECK CUTTING AND THOROUGHLY CLEAN THE FIELD MEMBRANE WITH WEATHERED MEMBRANE CLEANER.
- AT RETROFIT WORK, INJECT FOAM INSULATION, WHERE EXISTING INSULATION IS EXCESSIVELY CUT, REMOVED OR DAMAGED. SHAVE PROTRUDING FOAM AT TOP TO ACHIEVE SMOOTH SUPPORTING SURFACE.
- APPROXIMATELY 1/8" (3mm) DIAMETER BEAD OF CUT-EDGE SEALANT IS REQUIRED ON CUT EDGES OF VERSI-WELD REINFORCED MEMBRANES.
- VERSICO UNIVERSAL SINGLE-PLY SEALANT 3/8" (10mm) DIAMETER BEAD. SEAL AROUND THE FASTENER PENETRATIONS AT ROOF MEMBRANE SURFACE IN A LOOP & APPLY ON THE TOP OF FASTENER HEAD ALSO.



PLAN VIEW
NOT TO SCALE



SUN PATH LIGHT PIPE CURB
(VERSIGARD/VERSIGARD WHITE EPDM FLASHING)

→ TPO MEMBRANE
 → APPROVED SUBSTRATE
 → SEE NOTE(S)

VERSICO SUN PATH
VSP-1