

ARCHITECTURAL NEWS

Topic: Stormwater Management

FACT: It is estimated that 33% of all polluted waters are polluted by stormwater runoff.

FACT: A typical city block generates 5X more water runoff than a woodland area of the same size.

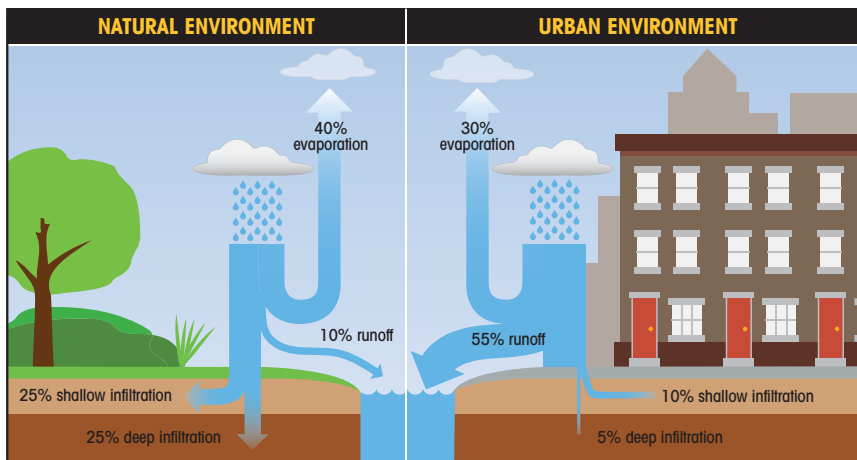
How Rainwater Catchment Systems Can Help

- Capturing rainfall from buildings and structures and reusing the rainwater can not only be a successful component of stormwater management, but can also contribute to the conservation of natural resources, such as water.
- Captured rainwater can be used for washing laundry, flushing toilets and watering plants. In areas, such as the Caribbean, captured rainwater is used for drinking.

Versico Offers Products That Fit an Environmentally Friendly Stormwater Management Strategy

- Versico's VersiWeld TPO conforms to the requirements of NSF Protocol P151, which certifies that rainwater catchment system components do not impart contaminants into the water at levels that exceed U.S. EPA drinking water regulations or advisories.

VersiWeld TPO is the only single-ply roofing membrane with NSF P151 certification.



SCAN HERE TO
FIND A LOCAL VERSICO
REPRESENTATIVE

Contact Versico at 800-992-7663 to find a local sales rep/distributor, or scan the QR code to find a representative or distributor in your area.



A SINGLE SOURCE FOR SINGLE-PLY ROOFING

Versico, PO Box 1289, Carlisle, PA 17013
Tel: 800.992.7663 Fax: 717.960.4036 Web: www.versico.com